

RacloFlex™ DP



RacloFlex™ DP HD



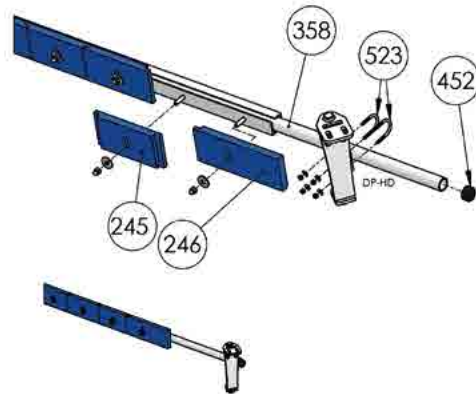
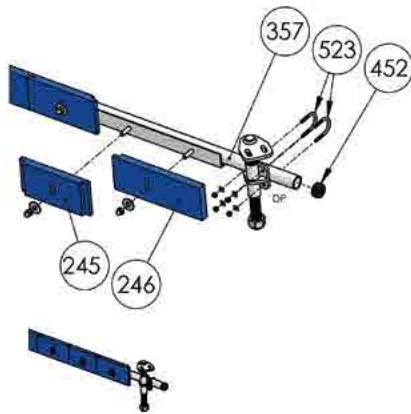
08/2024

TECHNICAL DATA SHEET

Position	Internal cleaner Diagonal plough
1 or 2 ways working	2 ways
Maximum speed	<ul style="list-style-type: none"> DP: 3m/s DP-HD: 5m/s
Blade type	V-shape segmented mono blade
Tension	Gravity slide
Wear compensation	Automatic gravity pressure + manual adjustment
Pressure	Gravity
Blade fixing	Bolted
Polyurethane quality	25mm ³ ISO4649
Structure quality	Steel ST37 Zinc plated (optional stainless steel)
Shaft size	Ø42,4 th.4
Bolts quality	Stainless steel
Ambient temperature range	-10°C / +50°C wet / +70° dry
Product temperature range	0°C / +50°C

RacloFlex™ DP

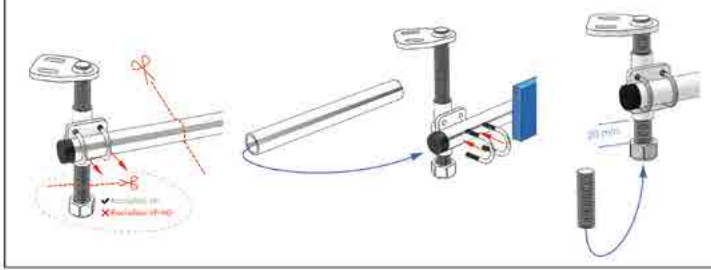
Spare Parts
SPRF 170710 151 - EN



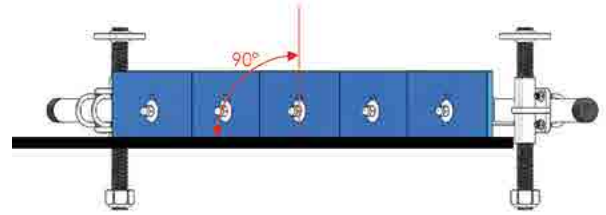
N°	Designation	Quality	Variant(s)	Belt	Structure size	Structure Ref.	Blade Module A Qty	Blade Module B Qty
245	Blade Module A	PUR						
246	Blade Module B	PUR						
357	Structure DP	Galva. ST	377: SST	500	500/650	357	3	
				650	500/650	357	1	2
358	Structure DP-HD	Galva. ST	378: SST	800	800/1000	357	5	
				1000	800/1000	357	3	2
451	Multifool wrench	Galva. ST		1200	1200/1400	357	7	
452	Cap	Galva. ST		1400	1200/1400	357	5	2
				1600	1400/1800	358	9	
455	Shift ring	Galva. ST	475: SST	1800	1600/1800	358	7	2
				2000	2000/2200	358	11	
523	U42 bolt	Galva. ST	533: SST	2200	2000/2200	358	9	2

INSTRUCTIONS

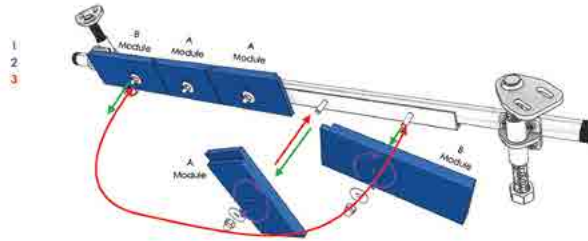
Axes et réglage de la largeur / Axles and width adjustment / Achsen und Breitereinstellung



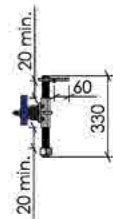
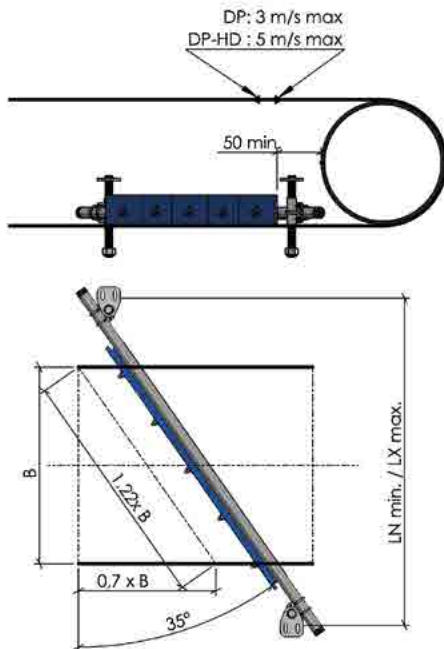
Réglage de l'angle / Angle adjustment / Winkelverstellung



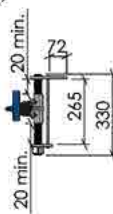
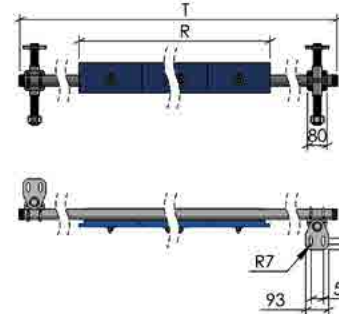
Si Modules B présents: les échanger lors du retournement à 180°
 If B Modules are present: Swap them when turning at 180° adjustment
 Wenn modul B vorhanden sind, müssen sie beim 180° drehen miteinander ausgetauscht werden



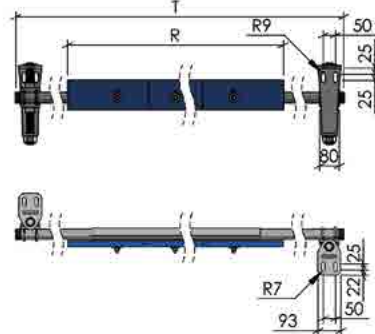
Dimensions



RacioFlex DP



RacioFlex DP-HD



Vapeur/Steam
Dampf



RacioFlex^{DP}

RacioFlex^{DP} HD

MLT GROUP
Conveyor Solutions Expert

Format A4

Plan N° 170706 101

Échelle 1:20

BT/BW/BB	400	500	650	800	1000	1200	1400	1600	1800	2000	2200
1,22 x B	488	610	793	976	1220	1464	1708	1952	2196	2440	2684
R	641	728	877	1200	1349	1672	1821	2144	2293	2616	2765
T	1800	2000	2000	2500	2500	3000	3000	3400	3400	3900	3900
LN	805	970	1000	1260	1390	1645	1775	2085	2210	2475	2600
LX	1570	1760	1760	2150	2150	2535	2535	2950	2950	3340	3340

T°C min/max	-10	+50
pH min/max	3	11